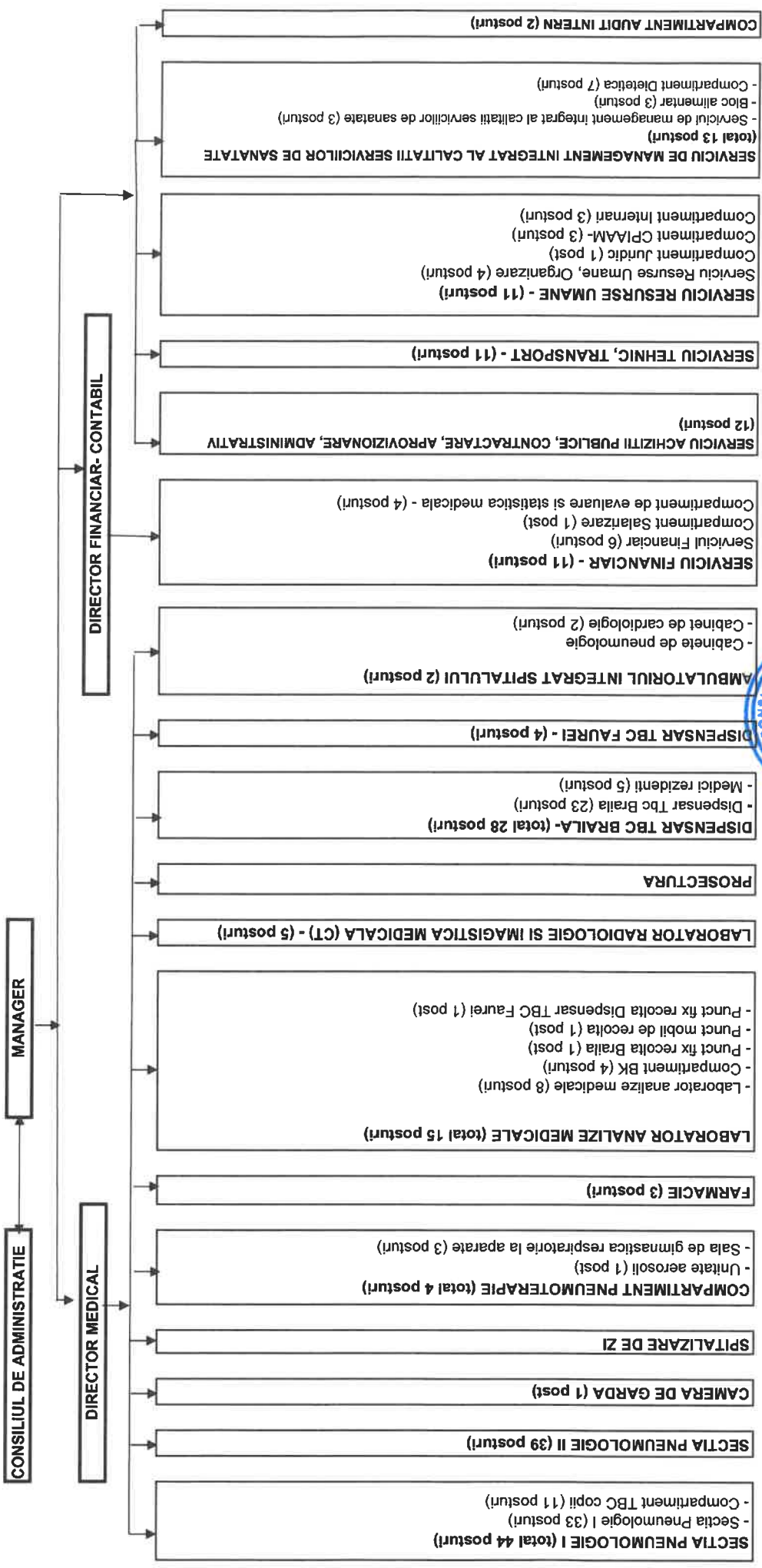


15 functii de conducere  
193 functii de executie  
208 posturi

Anexa nr.1  
la HCG Braila nr.223/2024

CONSILIUL JUDETEAN BRAILA  
**SPITALUL DE PNEUMOFIZIOLOGIE**  
Str. R.S. Campiniu Nr. 21, Braila, 810003,  
Tel: 0239 613 665; Fax: 0239 613 113  
www.spitalutbcbcr.ro  
spitalutbcbraile@yahoo.com

ANMCS  
unitate afiliată în  
PROCES DE ACREDITARE  
CICLUL al II-lea




Anexa nr.2  
la HCG Braila  
nr. 223 / 2024

**CONSILIUL JUDETEAN BRAILA**  
**SPITALUL DE PNEUMOFIZIOLOGIE**

**ANMCS**  
unitate afiliată în  
PROCES DE ACREDITARE  
CICLUL al II-lea

Str. R.S. Campinlu Nr. 21, Braila, 810003,  
Tel: 0239 613 665; Fax: 0239 613 113  
www.spitaluibcbr.ro  
spitaluibcbraila@yahoo.com



**STAT DE FUNCTII LA DATA DE 10.09.2024**

**CONDUCERE**

Nr Crt.	Denumirea functiei	Grad profesional	Studii	Grad	Post	Observatii
1	Manager		S		1.0	
2	Director financiar-contabil		S	II	1.0	
3	Director medical		S		1.0	

**Total CONDUCERE** **3.0**

**SECTII MEDICALE**  
**SPITAL**

**SECTIA PNEUMOLOGIE I**

Nr Crt.	Denumirea functiei	Grad profesional	Studii	Grad	Post	Observatii
4	Sef sectie		S		1.0	
5	Medic	Primar	S		1.0	
6	Medic	Primar	S		1.0	
7	Medic	Specialist	S		1.0	
8	Medic	Specialist	S		1.0	
9	Asistent sef	Principal	PL		1.0	
10	Asistent medical	Principal	PL		1.0	
11	Asistent medical	Principal	PL		1.0	

12	Asistent medical	Principal	PL	1.0	
13	Asistent medical	Principal	PL	1.0	
14	Asistent medical	Principal	PL	1.0	
15	Asistent medical	Principal	PL	1.0	
16	Asistent medical	Principal	PL	1.0	
17	Asistent medical	Principal	PL	1.0	
18	Asistent medical	Principal	PL	1.0	
19	Asistent medical	Principal	PL	1.0	
20	Asistent medical	Principal	PL	1.0	
21	Asistent medical	Principal	PL	1.0	
22	Asistent medical	Principal	S	1.0	
23	Asistent medical	Principal	PL	1.0	SUSPENDAT TEMPORAR
24	Asistent medical	Principal	S	1.0	
25	Asistent medical		PL	1.0	
26	Infirmiera		G	1.0	
27	Infirmiera		G	1.0	
28	Infirmiera		G	1.0	
29	Infirmiera		G	1.0	
30	Infirmiera		G	1.0	
31	Infirmiera		G	1.0	
32	Infirmiera		G	1.0	
33	Ingrijitoare		G	1.0	
34	Ingrijitoare		G	1.0	VACANT
35	Ingrijitoare		G	1.0	
36	Psiholog	Practicant	S	1.0	

**Total SECTIA PNEUMOLOGIE I** 33.0

**COMPARTIMENT TBC COPII**

37	Medic	Primar	S	1.0	MEDIC COORD.
38	Asistent medical	Principal	PL	1.0	ASISTENT COORD.
39	Asistent medical	Principal	PL	1.0	
40	Asistent medical	Principal	PL	1.0	
41	Asistent medical	Principal	PL	1.0	
42	Asistent medical	Principal	PL	1.0	
43	Infirmiera		G	1.0	
44	Infirmiera		G	1.0	
45	Infirmiera		G	1.0	
46	Infirmiera		G	1.0	
47	Infirmiera		G	1.0	

---

---

**Total COMPARTIMENT TBC COPII** 11.0

---

---

**Total SECTIA PNEUMOLOGIE I** 44.0

## SECTIA PNEUMOLOGIE II

Nr. Crt.	Denumirea functiei	Grad profesional	Studii	Grad	Post	Observatii
48	Sef sectie		S		1.0	
49	Medic	Specialist	S		1.0	MEDIC COORD. AMBULATORIU
50	Medic	Specialist	S		1.0	
51	Medic	Primar	S		1.0	
52	Medic	Primar	S		1.0	
53	Medic	Specialist	S		1.0	
54	Asistent sef pe unitate	Principal	PL	II	1.0	ASISTENT SEF UNITATE
55	Asistent sef	Principal	PL		1.0	
56	Asistent medical	Principal	S		1.0	
57	Asistent medical	Principal	S		1.0	
58	Asistent medical	Principal	PL		1.0	
59	Asistent medical	Principal	PL		1.0	
60	Asistent medical	Principal	PL		1.0	
61	Asistent medical	Principal	S		1.0	
62	Asistent medical	Principal	PL		1.0	
63	Asistent medical	Principal	PL		1.0	
64	Asistent medical	Principal	PL		1.0	
65	Asistent medical	Principal	PL		1.0	
66	Asistent medical	Principal	PL		1.0	
67	Asistent medical	Principal	PL		1.0	
68	Asistent medical	Principal	PL		1.0	
69	Asistent medical	Principal	PL		1.0	
70	Asistent medical	Principal	PL		1.0	
71	Asistent medical	Principal	PL		1.0	
72	Infirmiera		G		1.0	
73	Infirmiera		G		1.0	
74	Infirmiera		G		1.0	
75	Infirmiera		G		1.0	
76	Infirmiera		G		1.0	
77	Infirmiera		G		1.0	
78	Infirmiera		G		1.0	
79	Infirmiera		G		1.0	
80	Infirmiera		G		1.0	
81	Infirmiera		G		1.0	
82	Ingrijitoare		G		1.0	
83	Ingrijitoare		G		1.0	

84	Ingrjiitoare			G		1.0
85	Kinetoterapeut			S		1.0
86	Asistent medical	Principal		PL		1.0

**Total SECTIA PNEUMOLOGIE II** 39.0

**CAMERA DE GARDA**

Nr Crt.	Denumirea functiei	Grad profesional	Studii	Grad	Post	Observatii
87	Asistent medical		PL		1.0	

**Total CAMERA DE GARDA** 1.0**COMPARTIMENT PNEUMOTERAPIE****UNITATE AEROSOLI**

88	Asistent medical	Debutant	PL		1.0	VACANT
----	------------------	----------	----	--	-----	--------

**Total UNITATE AEROSOLI** 1.0**SALA DE GIMNASTICA RESPIRATORIE LA APARATE**

89	Kinetoterapeut	Principal	S		1.0	VACANT
90	Asistent medical		PL		1.0	VACANT
91	Ingrijitoare		G		1.0	VACANT

**Total SALA DE GIMNASTICA RESPIRATORIE LA APARATE** 3.0**Total COMPARTIMENT PNEUMOTERAPIE** 4.0**LABORATOR RADIOLOGIE SI IMAGISTICA MEDICALA (CT)**

Nr Crt.	Denumirea functiei	Grad profesional	Studii	Grad	Post	Observatii
92	Medic	Primar	S		1.0	MEDIC COORD.
93	Asistent medical	Principal	S		1.0	ASISTENT COORD.
94	Asistent medical	Principal	PL		1.0	
95	Asistent medical	Principal	PL		1.0	
96	Asistent medical	Principal	PL		1.0	





**FARMACIE**

Nr Crt.	Denumirea functiei	Grad profesional	Studii	Grad	Post	Observatii
97	Farmacist sef	Specialist	S		1.0	
98	Asistent medical	Principal	PL		1.0	
99	Asistent medical	Principal	PL		1.0	VACANT

**Total FARMACIE** **3.0**

**LABORATOR ANALIZE MEDICALE**

Nr Crt.	Denumirea functiei	Grad profesional	Studii	Grad	Post	Observatii
100	Sef laborator		S		1.0	REZERVAT DIR. MEDICAL
101	Biolog	Specialist	S		1.0	
102	Biolog	Specialist	S		1.0	
103	Asistent medical	Principal	PL		1.0	
104	Asistent medical	Principal	PL		1.0	
105	Asistent medical	Principal	PL		1.0	
106	Registrator medical		M		1.0	
107	Ingrijitoare		G		1.0	

**Total LABORATOR ANALIZE MEDICALE** **8.0**

**COMPARTIMENT BK**

108	Biolog	Principal	S		1.0	BIOLOG COORD.
109	Asistent medical	Principal	PL		1.0	
110	Asistent medical		PL		1.0	
111	Ingrijitoare		G		1.0	

**Total COMPARTIMENT BK** **4.0**

**Punct fix recolta Braila**

112	Asistent medical	Principal	PL		1.0	VACANT
-----	------------------	-----------	----	--	-----	--------

**Total Punct fix recolta Braila** **1.0**

**Punct mobil de recolta**

113	Asistent medical	Debutant	PL	1.0	
-----	------------------	----------	----	-----	--

**Total Punct mobil de recolta** 1.0

**Punct fix recolta dispensar TBC Faurei**

114	Asistent medical	Debutant	PL	1.0	VACANT
-----	------------------	----------	----	-----	--------

**Total Punct fix recolta dispensar TBC Faurei** 1.0

**Total LABORATOR ANALIZE MEDICALE** 15.0

**SERVICIUL DE MANAGEMENT INTEGRAT AL CALITATII SERVICIILOR DE SANATATE**

Nr Crt.	Denumirea functiei	Grad profesional	Studii	Grad	Post	Observatii
115	Sef serviciu		S	II	1.0	

**Total SEF SERVICIU** **1.0**

**COMPARTIMENT DE MANAGEMENT INTEGRAT AL CALITATII SERVICIILOR DE SANATATE**

Nr Crt.	Denumirea functiei	Grad profesional	Studii	Grad	Post	Observatii
116	Referent de specialitate	I	S		1.0	
117	Economist	IA	S		1.0	SUSPENDAT TEMPORAR

**Total COMPARTIMENT DE MANAGEMENT INTEGRAT AL CALITATII SERVICIIL** **2.0**

**BLOC ALIMENTAR**

Nr Crt.	Denumirea functiei	Grad profesional	Studii	Grad	Post	Observatii
118	Muncitor calificat	I	G		1.0	
119	Muncitor calificat	III	G		1.0	
120	Ingrijitoare		G		1.0	

**Total BLOC ALIMENTAR** **3.0**

**COMPARTIMENT DIETETICA**

Nr Crt.	Denumirea functiei	Grad profesional	Studii	Grad	Post	Observatii
121	Asistent medical	Principal	PL		1.0	ASISTENT COORD.
122	Infirmiera		G		1.0	
123	Infirmiera		G		1.0	
124	Infirmiera		G		1.0	
125	Infirmiera		G		1.0	
126	Infirmiera		G		1.0	VACANT

127	Infirmiera		G		1.0	VACANT
-----	------------	--	---	--	-----	--------

**Total COMPARTIMENT DIETETICA** 7.0

**Total SERVICIUL DE MANAGEMENT INTEGRAT AL CALITATII SERVICIILOR DE** 13.0

**TOTAL SPITAL** 127.0

## **DISPENSAR TBC**

### **DISPENSAR TBC BRAILA**

Nr Crt.	Denumirea functiei	Grad profesional	Studii	Grad	Post	Observatii
128	Asistent medical	Principal	PL		1.0	ASISTENT COORD.
129	Asistent medical	Principal	PL		1.0	
130	Asistent medical	Principal	PL		1.0	
131	Asistent medical	Principal	PL		1.0	
132	Asistent medical	Principal	PL		1.0	
133	Asistent medical	Principal	PL		1.0	
134	Asistent medical	Principal	PL		1.0	
135	Asistent medical	Principal	PL		1.0	
136	Asistent medical	Principal	PL		1.0	
137	Asistent medical	Principal	PL		1.0	
138	Asistent medical	Principal	PL		1.0	
139	Asistent medical	Principal	PL		1.0	
140	Asistent medical	Principal	PL		1.0	
141	Asistent medical	Principal	PL		1.0	
142	Asistent medical	Principal	PL		1.0	
143	Asistent medical	Principal	PL		1.0	
144	Asistent medical	Principal	S		1.0	
145	Asistent medical	Principal	PL		1.0	
146	Asistent medical		PL		1.0	
147	Statistician medical	Principal	M		1.0	
148	Registrator medical	Principal	M		1.0	
149	Ingrijitoare		G		1.0	
150	Ingrijitoare		G		1.0	

**Total DISPENSAR TBC BRAILA** **23.0**

**MEDICI REZIDENTI**

Nr Crt.	Denumirea functiei	Grad profesional	Studii	Grad	Post	Observatii
151	Medic rezident	Anul IV-V	S		1.0	
152	Medic rezident	Anul II	S		1.0	
153	Medic rezident	Anul III	S		1.0	
154	Medic rezident	Anul II	S		1.0	
155	Medic rezident	Anul I	S		1.0	VACANT

**Total MEDICI REZIDENTI** **5.0**

**Total DISPENSAR TBC BRAILA** **28.0**

**DISPENSAR TBC FAUREI**

Nr Crt.	Denumirea functiei	Grad profesional	Studii	Grad	Post	Observatii
156	Asistent medical	Principal	PL		1.0	
157	Asistent medical	Principal	PL		1.0	
158	Registrator medical	Principal	M		1.0	
159	Ingrijitoare		G		1.0	

**Total DISPENSAR TBC FAUREI** **4.0**

**TOTAL DISPENSAR TBC** **32.0**

**AMBULATORIUL INTEGRAT AL SPITALULUI**

**CABINET DE CARDIOLOGIE**

Nr Crt.	Denumirea functiei	Grad profesional	Studii	Grad	Post	Observatii
160	Medic	Specialist	S		1.0	
161	Asistent medical		PL		1.0	SUSPENDAT TEMPORAR

**Total CABINET DE CARDIOLOGIE** **2.0**

**TOTAL AMBULATORIUL INTEGRAT AL SPITALULUI** 2.0

**TOTAL SECTII MEDICALE** 161.0

**APARAT FUNCTIONAL**

**SERVICIU FINANCIAR**

Nr Crt.	Denumirea functiei	Grad profesional	Studii	Grad	Post	Observatii
162	Sef serviciu		S	II	1.0	

**Total SEF SERVICIU** 1.0

**COMPARTIMENT FINANCIAR**

Nr Crt.	Denumirea functiei	Grad profesional	Studii	Grad	Post	Observatii
163	Economist	IA	S		1.0	SUSPENDAT TEMPORAR
164	Economist	IA	S		1.0	
165	Economist	IA	S		1.0	
166	Economist	IA	S		1.0	
167	Registrator medical		M		1.0	

**Total COMPARTIMENT FINANCIAR** 5.0

**COMPARTIMENT SALARIZARE**

Nr Crt.	Denumirea functiei	Grad profesional	Studii	Grad	Post	Observatii
168	Referent de specialitate	Debutant	S		1.0	VACANT

**Total COMPARTIMENT SALARIZARE** 1.0

**COMPARTIMENT DE EVALUARE SI STATISTICA MEDICALA**

Nr Crt.	Denumirea functiei	Grad profesional	Studii	Grad	Post	Observatii
169	Asistent medical	Principal	PL		1.0	ASISTENT COORD.

170	Analist	IA	S	1.0	
171	Economist	IA	S	1.0	
172	Asistent medical	Principal	PL	1.0	

**Total COMPARTIMENT DE EVALUARE SI STATISTICA MEDICALA 4.0**

**Total SERVICIU FINANCIAR 11.0**

**SERVICIU ACHIZITII PUBLICE, CONTRACTARE, APROVIZIONARE, ADMINISTRATIV**

Nr Crt.	Denumirea functiei	Grad profesional	Studii	Grad	Post	Observatii
173	Sef serviciu		S	II	1.0	
174	Economist	IA	S		1.0	
175	Operator date	II	M		1.0	
176	Muncitor calificat	IV	G		1.0	
177	Muncitor calificat	I	G		1.0	
178	Spalatoreasa		G		1.0	
179	Spalatoreasa		G		1.0	
180	Spalatoreasa		G		1.0	
181	Spalatoreasa		G		1.0	
182	Muncitor calificat	IV	G		1.0	
183	Economist	Debutant	S		1.0	VACANT
184	Ingrijitoare		S		1.0	

**Total SERVICIU ACHIZITII PUBLICE, CONTRACTARE, APROVIZIONARE, ADMINISTRAT 12.0**

**SERVICIU TEHNIC, TRANSPORT**

Nr Crt.	Denumirea functiei	Grad profesional	Studii	Grad	Post	Observatii
185	Sef serviciu		S	II	1.0	
186	Muncitor calificat	IV	G		1.0	
187	Muncitor calificat	I	G		1.0	
188	Muncitor calificat	I	G		1.0	
189	Muncitor calificat	III	G		1.0	
190	Muncitor calificat	III	G		1.0	
191	Muncitor calificat	IV	G		1.0	VACANT
192	Muncitor calificat	IV	G		1.0	
193	Muncitor calificat	IV	M		1.0	
194	Muncitor calificat	IV	M		1.0	

195	Muncitor calificat	IV	M	1.0	
-----	--------------------	----	---	-----	--

**Total SERVICIU TEHNIC, TRANSPORT 11.0**



**SERVICIU RESURSE UMANE**

Nr Crt.	Denumirea functiei	Grad profesional	Studii	Grad	Post	Observatii
196	Sef serviciu		S	II	1.0	VACANT

**Total SEF SERVICIU****1.0****COMPARTIMENT RESURSE UMANE**

Nr Crt.	Denumirea functiei	Grad profesional	Studii	Grad	Post	Observatii
197	Referent de specialitate	I	S		1.0	SEF SERVICIU INTERIMAR
198	Referent	Debutant	M		1.0	VACANT
199	Referent	Debutant	M		1.0	VACANT

**Total COMPARTIMENT RESURSE UMANE****3.0****COMPARTIMENT JURIDIC**

Nr Crt.	Denumirea functiei	Grad profesional	Studii	Grad	Post	Observatii
200	Consilier juridic	IA	S		1.0	

**Total COMPARTIMENT JURIDIC****1.0****COMPARTIMENT CPIAAM**

Nr Crt.	Denumirea functiei	Grad profesional	Studii	Grad	Post	Observatii
201	Medic	Specialist	S		1.0	
202	Asistent medical		PL		1.0	
203	Asistent medical	Debutant	PL		1.0	VACANT

**Total COMPARTIMENT CPIAAM** **3.0**

**COMPARTIMENT INTERNARI**

Nr Crt.	Denumirea functiei	Grad profesional	Studii	Grad	Post	Observatii
204	Registrator medical		M		1.0	
205	Registrator medical		M		1.0	
206	Registrator medical		M		1.0	

**Total COMPARTIMENT INTERNARI** **3.0**

**Total SERVICIU RESURSE UMANE** **11.0**

**COMPARTIMENT AUDIT INTERN**

Nr Crt.	Denumirea functiei	Grad profesional	Studii	Grad	Post	Observatii
207	Auditor	I	S		1.0	VACANT
208	Auditor	II	S		1.0	VACANT

**Total COMPARTIMENT AUDIT INTERN** **2.0**

**TOTAL SERVICII AUXILIARE** **47.0**

**TOTAL GENERAL** **208**

Manager,

Ec. Sinpetru Stefan



Intocmit,  
Serv. Resurse Umane  
Sef serv. Malinche Diana-Mihaela